

**AnkerMake**

3D Printers by Anker

AnkerMake M5 3D Printer

**5X Faster, Extra Intelligent.**



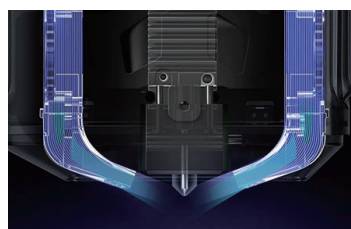
AnkerMake M5 prints 5X faster<sup>[1]</sup> with 0.1 mm precision<sup>[2]</sup> to get those curves perfectly smooth. With the built-in AI Camera Recognition system, your prints stay on track. And you can print from anywhere<sup>[3]</sup> with multiple devices. Stop waiting, and let us help you print smarter and faster at every step.



**5X Faster Printing<sup>[1]</sup>**

**PowerBoost™**

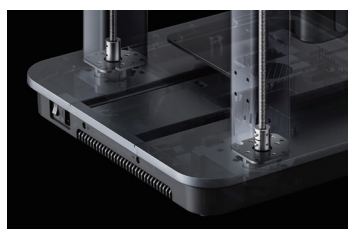
- Powerful Stepper Motor
- Double-Belt Driveshaft
- Stabilized-Motion Algorithm



**Precise 0.1 mm Detail<sup>[2]</sup>**

**Ultra-Direct Extruder**

- Extrusion: Higher Multi-Stage Gear Ratio
- Melting: Larger Heating Block
- Cooling: More Air Input Volume



**Aluminum Alloy Structure**

- Integrated Base
- Larger Z-Axis Cross-Section
- Double Z-Axis Leadscrew Motors



**Built-In AI Camera Monitoring**

- AI Camera Recognition System
- Real-Time Monitoring via App
- XBurst™ CPU



**7×7  
Auto-Leveling**



**Auto-Created  
Timelapses**



**Hub Connects  
Multiple Devices**



**Printing Status  
Notifications**



**Easy  
Assembly**



**Print Volume  
235×235×250 mm<sup>3</sup>**



**Picks Up Prints  
After Outages**



**Save Material  
with Instant Alerts**

[1] The standard operating speed of AnkerMake is 250 mm/s. Compared to other regular 3D printers working at 50 mm/s as a standard operation speed, AnkerMaker works 5 times faster.

[2] Tests were conducted by AnkerMake in Sep. 2022 using AnkerMake M5 3D Printer at a standard operation speed of 250 mm/s. Test results reflect the approximate performance of AnkerMake M5 3D Printer. The tested model was a standard cube with a volume of 50×50×50 mm<sup>3</sup>.

[3] The 3D printer needs to be connected with the AnkerMake app. The app only works when all linked devices are connected to the Internet.

# Specifications

Printing Parameters		Printing Features	
Print Volume (L×W×H)	235×235×250 mm <sup>3</sup>	Extruder	Ultra Direct Extruder
Standard Speed	250 mm/s	Part Cooling	Double Cooling Fan
Acceleration	2,500 mm/s <sup>2</sup>	Extruding Gear	Double Hardened Steel
Operation Speed	50-250 mm/s	Heated Plate	PEI Soft Magnetic Steel
Print Precision	±0.1 mm <sup>[1]</sup>	Auto-Leveling	Auto 49 (7×7) Points
Nozzle Diameter	0.4 mm (Compatible with 0.2/0.6/0.8 mm)	Filament Sensor	Broken Material Detection
Filament Diameter	1.75 mm	Resume Printing	Supported
Print Materials	PLA/PETG/TPU/ABS		
Extruder Temperature	Maximum 500°F (260°C)		
Heating Plate Temperature	Maximum 212°F (100°C)		
Electronic		Software	
CPU	Dual XBurst(1.2GHz) + XBurst 0(240MHz)	Slicer Software	AnkerMake Slicer (macOS, Windows), Simplify 3D, Ultimaker Cura, PrusaSlicer
Operation System	Linux	File Input Format	STL, OBJ
EMMC	8 GB	Supported OS	MacOS, Windows
Connection	Wi-Fi (App, AnkerMake Slicer), Type-C USB Flash Drive, OTA Upgrade		
Camera	Detection: AI Recognition Real-Time Monitoring: Up to 720p Timelapse Videos: 1080p Timelapse Videos Frame Rate: 30fps Night Vision: Infrared + LED		
Display	4.3-Inch Touch Screen		
Remote Control	AnkerMake App, AnkerMake Slicer		
Voice Assistant	The Google Assistant, Amazon Alexa (Printing Status Check Only)		
Power	350W		
Power Input	AC 100-240V		
		Body	
		Machine Size	502x438x470 mm (Without Filament Holder)
		Net Weight <sup>[2]</sup>	27.3 lb / 12.4 kg
		Gross Weight <sup>[3]</sup>	32.6 lb / 14.8kg
		<p>[1] Test Model: Cube - 50 x 50 x 50 mm<sup>3</sup></p> <p>[2] For products shipped to different countries, the net weight may have a slight difference.</p> <p>[3] For products shipped to different countries, the gross weight may have a slight difference.</p>	

## Product Comparison

Product Name	AnkerMake M5	F250	MK3S+
Price	\$799	\$999	\$799 Kit / \$1099 Assembled
Print Volume (L×W×H)	235×235×250 mm <sup>3</sup>	230×250×235 mm <sup>3</sup>	250×210×210 mm <sup>3</sup>
Print Precision	±0.1 mm	±0.1 mm	/
Standard Nozzle Diameter	0.4 mm	0.4 mm	0.4 mm
Filament Diameter	1.75 mm	1.75 mm	1.75 mm
Setup Time	✔ 15 Minutes	/	8 hours (Kit Version)
Standard Speed	✔ 250 mm/s, 2,500 mm/s <sup>2</sup>	50 mm/s	80-100 mm/s
Operation Speed	✔ 50-250 mm/s	40-60 mm/s	80-200 mm/s
Heated Plate	✔ PEI Soft Magnetic Steel	PC Plate	PEI Soft Magnetic Steel
Auto-Leveling	✔ Auto 7×7 Points	Auto 3×3 Points	Auto 3×3 Points
Connection	✔ Wi-Fi (App, AnkerMake Slicer), Type-C USB Flash Drive, OTA Upgrade	Wi-Fi, USB Cable, USB Flash Drive	SD Card, USB Cable
AI Recognition Camera	✔ 1080p HD, Real-Time Monitoring, Timelapse Videos, Frame Rate: 30 fps	N	N
Remote Control	✔ AnkerMake App, AnkerMake Slicer, Google Assistant, Amazon Alexa	N	N